



# July 2016 LOCO News



**Next Meeting: Tuesday, July 12th  
7:00 pm**

**Carlisle Reservation**

**Snacks: Kathy Webb, Karen Long,  
Gina Talandis**

## JULY PROGRAM

**Lynn Kosinski and Renee Brown will present a  
Kumihimo Loom demonstration!**

### Upcoming Demo Schedule

**(please always remember to bring your own chair)**

**MEDINA FAIR. FRI, AUG. 5. 9:00am - 3:00pm.**

**Women Grow Ohio Farm Fair, SUN, AUG 7. 1:00 PM to 4:00 PM EDT**

**Aggie's Rest Farm (Sheryl Billman)**

**19107 Avon Belden Rd**

**Grafton, OH**

**CUYAHOGA FAIR THURS, AUG 11, KIDS DAY. 11:00am - 4:00pm.**

**FRIDAY, AUG 12, SHEEP TO SHAWL. 6:00 pm - 9:00pm.**

**LORAIN FAIR, SUNDAY, AUG 28. 9:00am - 3:00pm.**

**PIONEER DAYS SEPT 21- 22. TUESDAY AND WEDNESDAY. 9:00am -1:30pm**

**BIRMINGHAM - SAT, OCT 1, SAT 9:00am - 4:00pm and SUN, OCT 2, 10:30am - 4:00pm**

**Lorain County Spinning and Weaving Guild  
November 10, 2015  
Carlyle Reservation**

### **Opening**

The regular meeting of the LOCO Spinning and Weaving Guild was called to order by President Elizabeth Yasaki. Elizabeth welcomed visitors Catharina Caldwell, guest speaker for the evening, Ruth Steinacker and Anne Busse.

### **Minutes**

*Jean moved and Karen second to accept the May, 2016 minutes as presented. The minutes were approved unanimously by voice vote.*

### **Reports**

**President** – Elizabeth Yasaki

Elizabeth informed members of Mary Beth Derikito passing away. She was an active spinner and weaver.

**Treasurer's report** – Betsy Bruce

We currently have \$3814.18 in account after the April workshop. New dues are not included in this report.

**Workshops** – Ed Rowe

Ed is waiting for proposal for flax workshop.

**Programs** – Ed Rowe

Nothing in the works.

**PR** – no report

**Library** – Eboni Johnson

Eboni brought DVD's to share on knitting along with magazines to sign out.

Elizabeth made comments about the new PLY magazine and thought it was worth the investment.

**Demonstrations** – Chris Strekley

Juneteenth is coming up. Fairs, Birmingham, Pioneer Day (date to be announced).

Notebook was passed around for members to sign up to help.

**Membership** – Cheryl Leasure (absent)

Patti and Chris were available to take dues and membership form. Dues are \$20. Forms are available to fill out.

Membership chair would appreciate membership dues ASAP so that the new membership booklet can be updated.

**Sunshine** – Christine Bruce

March – 3 birthdays and 1 sympathy

April – 5 birthdays

May – 7 birthdays

June – 2 birthdays

**Guild Equipment** – Julie Bragg

Julie is available during summer for members to sign out equipment.

**Refreshments** – Ann Hauser

Sign up sheet filled out for remainder of year.

(continued next page)

### **Fiber Samples –**

Alpaca fiber is available. Packed but not washed. Blond curls. Plastic bags were available for members to take some fiber.

### **Newsletter – Gina Talantis**

No report

### **Service Project**

Fliers, business cards available for shows or demonstrations

Fiber for next year will be available at the next meeting for members to start spinning. There is enough fiber for the next two years.

### **Announcements**

Smith's in Oberlin has yarn for half price. Auction will be 10:00 am on Saturday.

### **Old Business**

T-shirt etc. – still working on this project.

### **New Business**

Ann Hauser hosting a gathering at her home. An email went out to all members. Gina will resend Ann's email with information.

In August, nominating committee will meet to submit a slate of officers.

Mill Hollow garden is looking good. Betsy and Karen went to give it some TLC.

### **Show and Tell**

Eboni – shared pink socks and her knitting bag from Wooster

Che – Baby sweater for her 6<sup>th</sup> great grandchild

Chris Bruce – crochet slippers. She designed pattern and will share in newsletter. The pattern includes a flat bottom so that feet are on soft fiber. Chris also purchased dye plants at fiber show.

Cheryl – purchased Tibetan/silk yarn at Great Lake Fiber Show

Julie – Woven tabletop. She hid her “design element” by adding a hand woven darker thread.

Barbara Dittner – purchase fiber from show and spun it. Will use to knit a beaded lace cowl.

Mary Carmosino – made two scarves from dye day. First she used bamboo weft. Second she used linen weft.

Betsy Bruce – will be retiring December 31<sup>st</sup> and is making inquiries to join Peace Corps.

Jean – Shared her samplers from iridescent workshop. Will use the pattern in second sample for her next project. She also purchased a sweatshirt from show with saying “Project Half Done”.

Shelly – participated in a paper making workshop that used fibers and plants

Chris – making “koosies” for wine bottles that look like little sweaters.

Barb Enos – 2<sup>nd</sup> sample from iridescent workshop.

Elizabeth – Navajo plied rayon. Dyed it and made two scarves.

Meeting Adjourned 7:35

Evening concluded with presentation by guest Catharina Caldwell sharing her grandmother Elsie Gubser's weaving and bobbin lace. Elsie was an avid weaver and bobbin lace artist. She wrote numerous articles and was featured in newspapers during her lifetime. There were samples of blankets, hand towels, table runners Catharina's wedding dress and her mother's dress for the wedding.

Respectfully submitted,

Barb Enos acting secretary

**Etta Rowe gave a wonderful presentation on places to go and things to see in the area. Here is the list of items presented.**



## **Fiber and Color Resources (and fun places to visit too)**

### **Museums (most are closed on Mondays)**

Akron Art Museum: 330-376-9185/[akronartmuseum.org](http://akronartmuseum.org)

Buffalo: Albright-Knox Art Gallery/716-882-8700/[info@albrightknox.org](mailto:info@albrightknox.org)

Cincinnati Art Museum: 877-472-4226/[cincinnatiartmuseum.org](http://cincinnatiartmuseum.org)

Cleveland Museum of Art: 216-421-7350/[www.clevelandart.org](http://www.clevelandart.org)

Columbus: 614-221-6801/[www.columbusmuseum.org](http://www.columbusmuseum.org)

Dayton Art Institute: 937-223-4278/[www.daytonartinstitute.org](http://www.daytonartinstitute.org) (also closed Tuesdays)

Detroit Institute of Art: 313-833-7900/[www.dia.org](http://www.dia.org)

Erie Art Museum: 814-459-5477/[erieartmuseum.org](http://erieartmuseum.org)

Pittsburgh: Carnegie Museum of Art/412-622-3131/[www.cmoa.org](http://www.cmoa.org) (also closed Tuesdays)

Toledo Museum of Art: 419-255-8000/[www.toledomuseum.org](http://www.toledomuseum.org) (also Glass Museum)

### **Gardens**

Akron - Stan Hywet: 888-836-5533/[www.stanhywet.org](http://www.stanhywet.org)

Birmingham – Schoepfle Garden/440-965-7237/[www.metroparks.cc/schoepfle\\_garden.php](http://www.metroparks.cc/schoepfle_garden.php)

Cleveland Botanical Garden: 216-721-1600/[www.cb garden.org](http://www.cb garden.org)

Elmore - Schedel-Gardens.org/ May 1 – Oct 31/Tues-Sat 10-4.

Holden Arboretum: 440-946-4400/[holdenarb.org](http://holdenarb.org)

Mansfield - Kingwood Center: 419-522-0211/[www.kingwoodcenter.org](http://www.kingwoodcenter.org)

### **Living History**

Greenfield Village – Dearborn MI:[www.thehenryford.org/visit/Greenfield-village](http://www.thehenryford.org/visit/Greenfield-village)

Hale Farm & Village – Bath OH:[www.wrhs.org](http://www.wrhs.org). (closed Mondays and Tuesdays)

Lyme Village – Bellevue OH:419-483-4949/[lymevillage.com](http://lymevillage.com)

Sauder Village – Archbold OH: 800-590-9755/[www.saudervillage.org](http://www.saudervillage.org)[quilt,craft,rug hooking, fiber arts shows]

### **Fiber Shows ([localfibers.com/fiberfinder/midwest.aspx](http://localfibers.com/fiberfinder/midwest.aspx))**

BSSG Market Day – Bowling Green: usually the last Saturday in March

Shepherds Market Fiber Festival - Alliance

FAVA Quilt Show – Oberlin:5-15—7-31-16/The Artist as Quiltmaker Exhibition

Upper Valley Fiber Show – Troy:5-21-16/[uppervalleyfiberfest.org](http://uppervalleyfiberfest.org)

Great Lakes Fiber Show – Wooster:5-28&29-16

577 Perrysburg:6-10 to 12-16/[fiber577.com/juried](http://fiber577.com/juried) local show

Mid-Ohio Fiber Fair – Worthington:6-18&19-16/[www.midohiofiberfair.com](http://www.midohiofiberfair.com)

A Wool Gathering – Yellow Springs: 9-17&18-16

Autumn Fiber Festival – Ashland: 10-15-16/[www.autumnfiberfestival.com](http://www.autumnfiberfestival.com)

Newark: Listed under Midohio, but no info for 2016

### **Other Festivals and fun activities**

Flax Scutching Festival - Stahlstown PA:9-17&18-16/[www.flaxscutching.org](http://www.flaxscutching.org)

Wisconsin Flax Festival Labor Day Weekend

Contemporary Fiber Art Show – KSU until July 3.

Perambulator Museum near Ashtabula

Yarn Shops in Vermilion

Carrousel in Mansfield

Book Stores and Local Roots in Wooster

### **Longer Trips**

Home Textile Tool Museum – Orwell PA:Open Saturdays May 21-August27

Museum of the American Coverlet – Bedford PA

Old Bedford Village – Bedford PA

Ewe & Beth's Studio will be open each Tuesday [10 AM] throughout the month of July. Please join us for crafts, conversation, and a wonderful lunch (\$5). The Studio will be closed the entire month of August because of fairs; however, we are thinking of taking some road trips - Toledo Museum of Art and Glass Museum, Perambulator Museum, Aquarium, what sounds interesting to you? Call or email Etta (440-774-3210 or [Erowe1132@aol.com](mailto:Erowe1132@aol.com)) with your preferences. Hope to see you soon.

## Building a Canadian Great Wheel

[https://www.youtube.com/watch?v=CW\\_uVfNI93U](https://www.youtube.com/watch?v=CW_uVfNI93U)

Or go to [www.conoverworkshops.com](http://www.conoverworkshops.com), there is a AAW picture and along the bottom of that frame is a you tube symbol...click on that symbol and there will be a side thing on the right that says Building a Canadian Great Wheel.

Click on that and there you are.

A little project Ed Rowe and friends worked on.....

**I have the following back copies of Handwoven for sale:**

2004: 119, 120, 121  
 2005: 123, 124, 125, 126, 127  
 2006: 128, 129, 130, 131, 132  
 2007: 133, 134, 135, 136, 137  
 2008: 138, 138, 140 141, 142  
 2009: 143, 144, 147  
 2010: 148, 149, 150, 151, 152  
 2011: 153, 154, 155, 156, 157  
 2012: 158, 159, 160, 161, 162

I would like \$1 per issue or \$5 per complete year. (2004 and 2009 are not complete.) (These issues are now only available in electronic format from Interweave Press.) If interested, let me know. Thanks

Gail Dixon

From Eboni:

Hello!

My name is Lindsay, I am the event planner at The Alpacas Of Spring Acres. We are a 150 acre alpaca farm/bed & breakfast in Zanesville, Ohio. We are offering a two-day weaving class for beginners here at our farm taught by Sherry Mummert on August 6th and 7th. All materials will be provided and will be working on 4 harness countermarch looms. The first day will be spent warping, and the second day will be working on weft. The class is \$250 per person, from 9am to 4pm, stopping for lunch which we will provide.

If there are any beginners in your guild, or if you know people who are interested in learning how to weave, we would love to hear from them.

Thank you so much! Lindsay  
 (740)796-2170

<http://www.thealpacasofspringacres.com/>



# IT'S LOCO GUILD MEMBERSHIP RENEWAL TIME

**I will be collecting dues at the July 12<sup>th</sup> meeting, so you can either pay at the meeting, or please mail a check to:  
Made out to LOCO c/o Cheryl Lesure, 9555 River Corners Rd.,  
Homerville, OH 44235.**

Cathy Meints presented samples and articles about the work of her grandmother, Elsie Gubser. Her grandmother was quite a fiber artist. She wove Cathy's wedding dress, spun and wove silk and did bobbin lace among other techniques.

It was amazing collection of textiles!

Thank you!



## *Tunisian Slipper*

*use 2 - 4 ply yarns together or 1 bulky yarn  
2 - 4 oz skeins*

*Chain 30 st leave a 2 foot tail at beginning*

*row 1 1 st per chain across*

*row 2 1 st per front vertical bar.*

*continue for 28 rows*

*row 29 1 st every other st. (15 st)*

*row 30 1 st per front vertical bar (15 st)*

*row 31 1 st every other st. (8 st)*

*row 32 1 st per front vertical bar (8 st)*

*clip 2 or 3 feet of yarn and pull through last stitches knot and whipstitch toe about 12 rows.*

*whipstitch heel.*

*single crochet 2 rows around the top or more if you are unusually cold.*

Christine Bruce wrote out this pattern for us.....

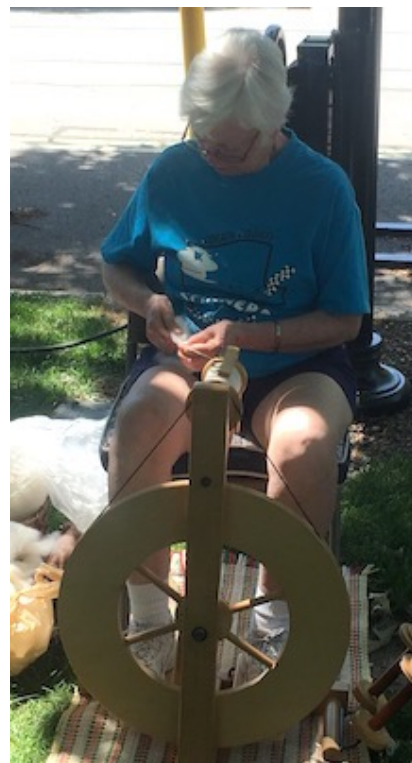




**Juneteenth 2016**  
**We just had fun all day!**



**Barb stopped by!**



Quote of the day...  
"This isn't a hobby, it is a post-apocalyptic skill set."  
Barb Dittmer

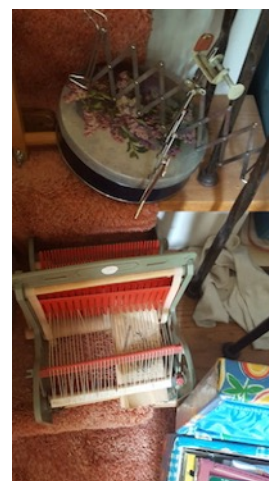
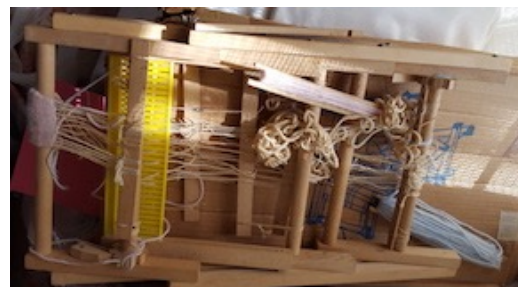
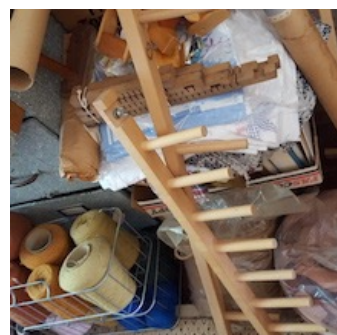
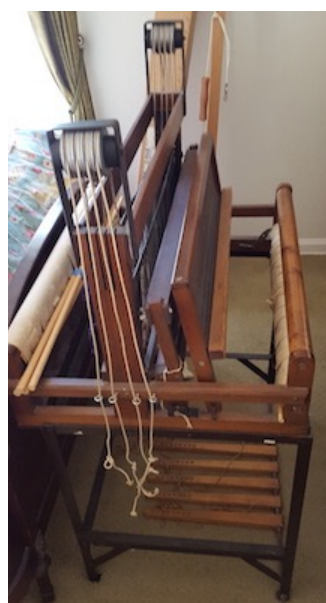
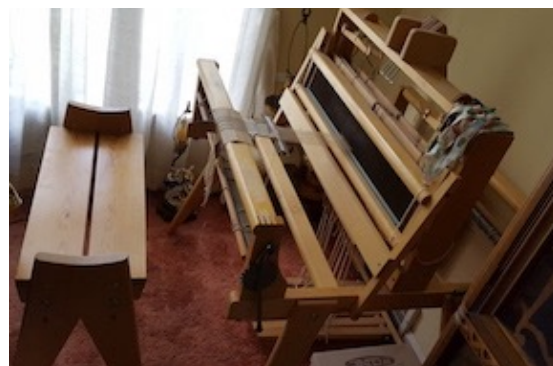
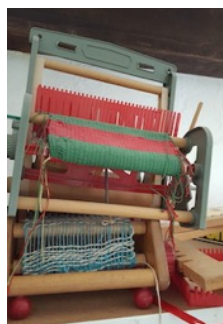




## Loom and Supply Sale

Weavers - there is a treasure trove of weaving looms, books, and supplies for sale in Fairview Park. The owner is in Cape Cod, but there are local contacts to show you what is available. The gem is a Harold 45" 8-harness, walnut, 10-treadle, sectional beam loom with tensioner. There is also a Le Clerc 27" 4-harness, 6-treadle loom with bench and a walnut, 25" 4-harness, 6-treadle loom on a metal stand. There are several inkle looms and other small looms, including an Erika; boxes of shuttles (the kind with metal tips) and bobbins; cones of wool, cotton, and linen threads; warping boards, yarn guides, raddles, and several items I couldn't identify. Many items are still in the box.

Contact Etta: 440-774-3210



**President:** Elizabeth Yasaki (440)463-8553  
[eyasaki@gmail.com](mailto:eyasaki@gmail.com)

**Vice President:** Karen Long 440-775-0201  
[karen@oberlin.net](mailto:karen@oberlin.net)

**Treasurer:** Betsy Bruce 440-774-7036  
[bbruce@oberlin.edu](mailto:bbruce@oberlin.edu)

**Secretary:** Carolyn Borsini 440-773-5713  
[carolynborsini@gmail.com](mailto:carolynborsini@gmail.com)  
 Eboni Johnson 614-625-7776  
[Eboni75@gmail.com](mailto:Eboni75@gmail.com)

**Workshops:** Beth Hines 440-458-4049  
[hinessheep@windstream.net](mailto:hinessheep@windstream.net)  
 Ed Rowe 216-269-5413  
[Erowe132@aol.com](mailto:Erowe132@aol.com)

**Programs:** Kathy Webb 419-577-7899  
[Kwebb31579@gmail.com](mailto:Kwebb31579@gmail.com)  
 Lynn Kopinski 216-333-2942  
[lynnkopinski@hotmail.com](mailto:lynnkopinski@hotmail.com)  
 Linnea Satterfield 440-308-1092  
[naesatt@netscape.net](mailto:naesatt@netscape.net)  
 Ed Rowe 216-269-5413  
[Erowe132@aol.com](mailto:Erowe132@aol.com)

**Public Relations:** Paige Funkhouser  
 609-802-7580  
[Pfunkhou@oberlin.edu](mailto:Pfunkhou@oberlin.edu)

**Library:** Eboni Johnson 614-625-7776  
[Eboni75@gmail.com](mailto:Eboni75@gmail.com)

**Demonstrations:** Chris Strekely 330-416-8195  
[Cjstrek1949@yahoo.com](mailto:Cjstrek1949@yahoo.com)

**Membership:** Cheryl Lesure 330-635-0338  
[cherldi@hotmail.com](mailto:cherldi@hotmail.com)

**Sunshine:** Christine Bruce 440-458-8092  
[christybspinall@yahoo.com](mailto:christybspinall@yahoo.com)

**Guild Equipment:** Julie Bragg 440-647-2335  
[jb76quilts@msn.com](mailto:jb76quilts@msn.com)

**Refreshments:** Ann Hauser 440-476-4675  
[meandruffy@yahoo.com](mailto:meandruffy@yahoo.com)

**Historian:** Nancy Kuhar 419-315-1550  
[nancyjk52@gmail.com](mailto:nancyjk52@gmail.com)

**Fiber Samples:** Kathy Webb 419-684-7056  
[kwebb31579@gmail.com](mailto:kwebb31579@gmail.com)

**Newsletter:** Gina Talandis  
 505-250-9431  
[darzas@juno.com](mailto:darzas@juno.com)

## Ed the Wheel Healer

Maker of Great Wheels  
 Mender of All Things  
 Spinning  
 Ed Rowe  
 45485 Hughes Rd.  
 Oberlin, OH 44074  
 (440) 774-3210  
 (216) 269-5413

## Slow & Easy Alpacas

Jim and Judy Keske  
 39136 State Rte. 18 East  
 Wellington, OH 44090  
 (440) 647-9502

Alpacas, yarn, roving  
 and fiber available  
 Call for prices and colors

## The Hines Sheep Co.

Tom, Beth and Holly  
 Hines

10735 LaGrange  
 Road, Elyria, OH  
 44035  
 (440) 458-4049

Fleece of champion  
 Columbias and  
 Southdowns and Natural  
 Sheep (black) Roving,  
 skins yarn, freezer lamb,  
 jerky. By Appointment

## Ginko Gallery

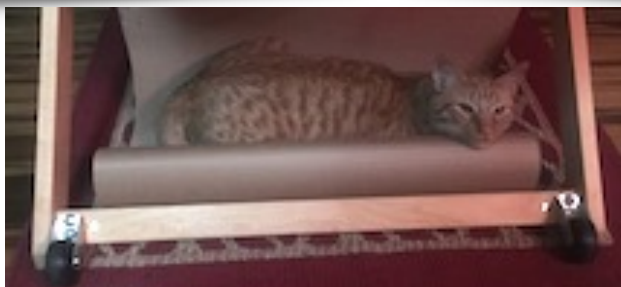
Liz Burgess  
 19 S. Main Oberlin, OH 44074  
 (440) 774-3117

Local Artists' Work,  
 Studio Space, Art Supplies

**Donations appreciated  
 for the kittens.**



**Please remember to shop at the Woolery  
 thru the icon on our homepage,  
<http://locoguild.com>**



**Whew, that was a lot of stuff to put in  
 one newsletter. Good thing there is  
 always a good place to nap on a loom.**